



Getting the most out of your BR1 Mini

APAC / AU / AF / EU region on 2019-05-17



Today agenda

1. Who we are
2. MAX Mobile Family
3. BR1 Mini Features
4. Use cases
5. FusionHub (Virtual appliance)
6. Q&A

Who We Are



Company History

- Founded in **2006**
- Over **70+ granted patents** regarding our SpeedFusion SD-WAN technology
- **Comprehensive** Wired and Wireless **SD-WAN** for any deployment



Strong Global Brand

- Over **500+ Partners/Resellers** in roughly **70 countries**
- Driven by **Passionate Industry Evangelists**

Efficient, Agile Team

- **150+ person team**
- **100+ dedicated R&D Engineers**
- **Rapid, open feedback loop**
- **Lean, efficient workflows**

Direct Communication

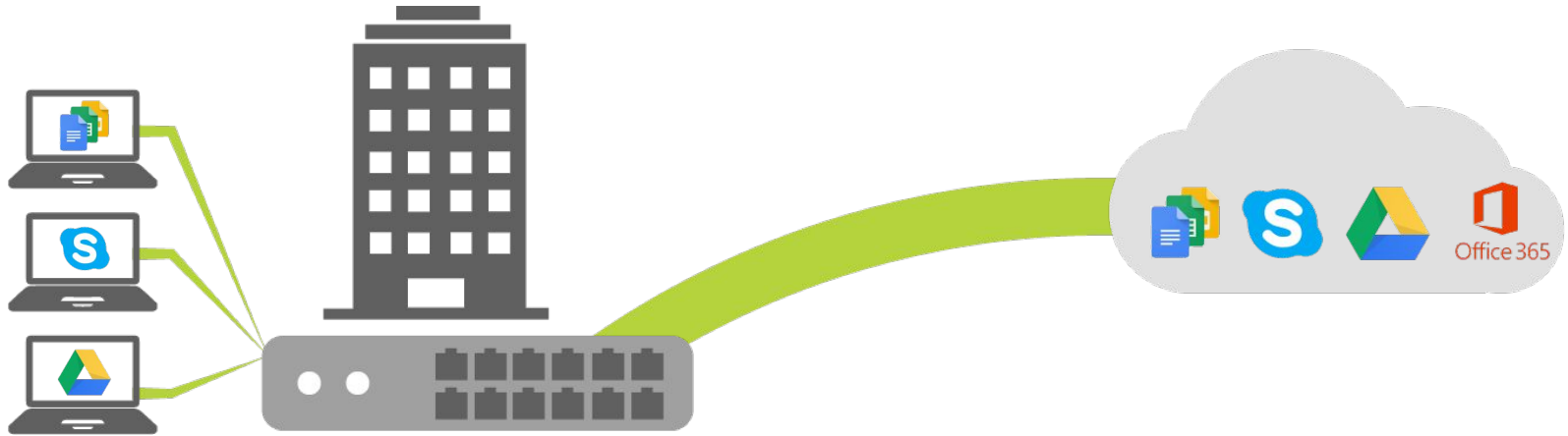
- **[Forum.peplink.com](https://forum.peplink.com)**
- Have direct communication with partners and end-users
- Dynamic and passionate team members stand ready

Recognized by Gartner



Gartner's MQ report (2018) shines a light on the brightest and most capable companies for WAN Edge solutions, and Peplink's expertise has earned us a spot on this prestigious report.

Unbreakable Connectivity

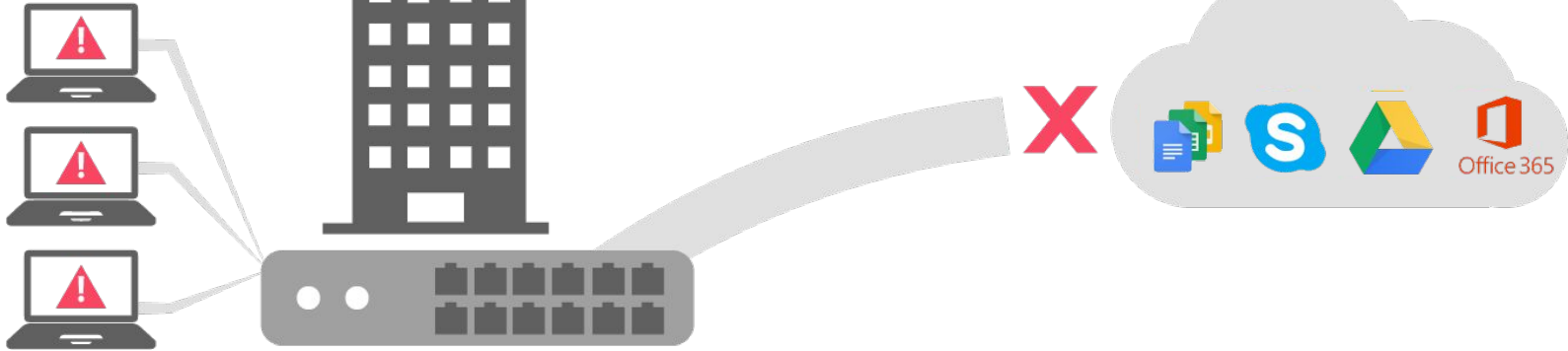


Your cloud apps require constant connectivity.

Unbreakable Connectivity

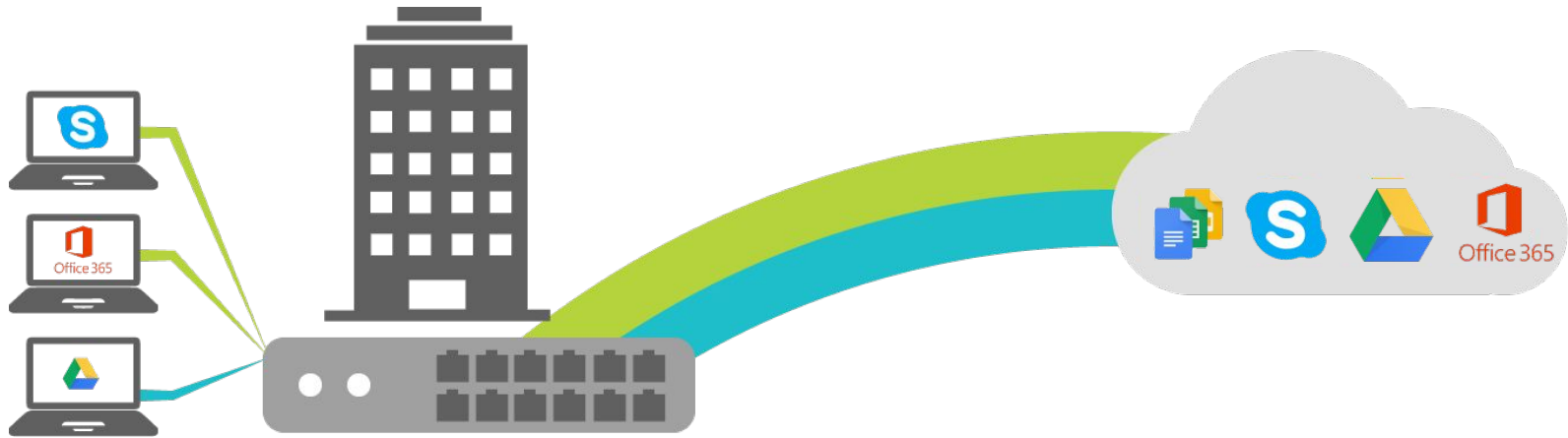


Connection
Lost



If your connection goes down, your office stops working.

Unbreakable Connectivity

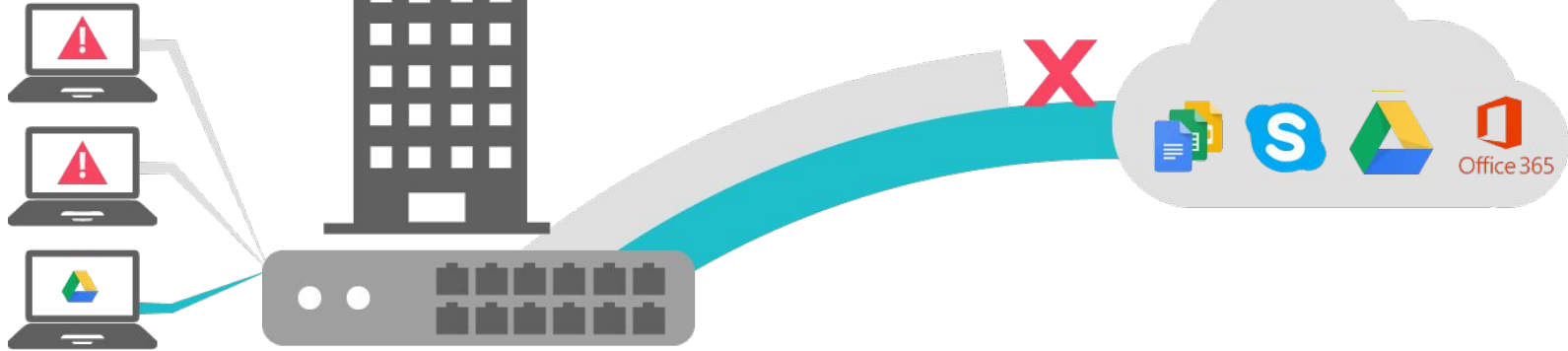


Even if you connect multiple WAN lines...

Unbreakable Connectivity



Connection
Lost



...a lost connection will lead to a broken session.

Unbreakable Connectivity



Enter **SpeedFusion SD-WAN**.
Combine multiple connections into a single VPN tunnel.

Unbreakable Connectivity



No Effect



Even if a line goes down, your office remains unaffected.

SpeedFusion

Peplink's position in SD-WAN industry



BB

Bandwidth Bonding

Combine the speed and bandwidth of multiple WAN connections.

WS

WAN Smoothing

Use multiple WAN connections to create a single, jitter-free data stream.

HF

Hot Failover

Switch from one WAN connection to another while keeping your sessions intact.

VPN

VPN

Offers the benefits of IPsec, plus a variety of performance and reliability features.

LB

Load Balancing

Improves the distribution of workloads across multiple computing resources

Routing

Performs direction of traffic and network authorization functions

cutting edge technology,
not visible by general users

Industry
standard
technology





MAX Mobile Family

MAX Mobile Family - Overview



SIM Failover

Each Cell Modem has **redundant SIM slots** for data cap protection and to ensure signal coverage.

IP67 Enclosure

Made from **aircraft-grade aluminum** and can withstand extreme weather



InControl 2

Monitor, Manage and Configure Peplink gear from the Cloud with **InControl 2**

SpeedFusion

SpeedFusion benefits for network resiliency, up-time, bandwidth aggregation, etc...

MAX Mobile Family - Group



Business Ready/BR Series:

Small form factor and wide power range for easy integration

- 1x Cell module with redundant SIM
- LTE-A versions available
 - [BR1, BR1 ENT, BR1 Slim, BR1 Mini, BR1 M2M, BR1 Pro, BR1 IP55, BR1 IP67](#)

Transportation Hotspot:

Makes fast, reliable internet for passengers

- Up to 2x LTE-A cell modems available
- Simultaneous Dual Band Wi-Fi AP
 - [MAX Transit and MAX Transit Duo](#)

USB Focus:

USB WAN for compatibility, Wi-Fi AP built in

- Up to 4x USB WAN possible
- Over 250+ USB modems supported
 - [MAX On-the-Go and MAX 700](#)







Heavy Duty/HD Series:

Multi cell modem means horsepower for your network

- Up to 4x Cell module with redundant SIM
- LTE-A versions available
 - [HD2 Mini, HD2, HD4, HD2 IP67, HD4 IP67](#)

MAX Mobile: BR/Business Ready



<u>BR1</u>	Offers redundant SIM slots with automatic switching, multiple power options, GPS fleet tracking, and remote management, all packed into a durable metal enclosure	<ul style="list-style-type: none">• 1x embedded Cell Modem (LTE-A ver available)• Rugged, Shock/Vibration resistant• 100Mb Bi-Directional throughput	
<u>BR1 Pro</u>	The MAX BR1 Pro comes with 4-port LAN switch and automatic failover, making it an ideal choice for deployments that demand outstanding reliability and flexibility	<ul style="list-style-type: none">• Built in 4-port LAN Switch• 1x embedded Cell Modem (LTE-A ver available)• 120Mb Bi-Directional throughput	
<u>BR1 Ent</u>	The MAX BR1 ENT delivers blazing speeds with automatic failover to LTE and comes without Wi-Fi, making it an ideal choice for deployments that demand security	<ul style="list-style-type: none">• No built in Wi-Fi for Security Hardened networks• PoE Output capable (with optional PoE kit add-on)• 300Mb Bi-Directional throughput	
<u>BR1 Mini</u>	Affordable, Industrial Grade LTE router that's perfect for M2M, Digital Signage, Kiosks and more! A small footprint and a variety of power options makes it easy to integrate	<ul style="list-style-type: none">• Optional add on for M2M/Out of Band Mgmt support• Eth and Wi-Fi as WAN as Optional Add-On• 100Mb Bi-Directional throughput	
<u>BR1 Slim</u>	Offering GPS fleet tracking, terminal block power capability, and full IC2 integration, The BR1 Slim is compact and tough enough for any deployment.	<ul style="list-style-type: none">• Dual Micro USB power Input• 10000mAh power bank = up to 7hrs of use• 100Mb Bi-Directional throughput	
<u>BR1 M2M</u>	The MAX BR1 M2M is a rugged, compact router specialized for M2M, featuring a 9-pin serial connector for easy and durable M2M connectivity.	<ul style="list-style-type: none">• Built in 9-pin Serial port for M2M usage• Din-Rail Mountable• 120Mb Bi-Directional throughput	

MAX Mobile: HD/Heavy Duty



MAX Mobile HD2

The **MAX HD2** gives you blazing fast connectivity on the road with dual embedded cellular modems and SpeedFusion bandwidth bonding, plus a built-in 4-port GE switch to reduce clutter in your mobile deployments.

- Terminal Block perfect for vehicle install
- PoE Output capable (with optional PoE kit add-on)
- LTE-A ver available
- 400Mbps throughput



MAX Mobile HD4

The **MAX HD4** delivers outstanding performance from all your connections with the help of SpeedFusion bandwidth bonding and intelligent load balancing.

- 4x embedded LTE Cell modems
 - LTE-A ver available
- Up to 8x PoE output LAN ports
 - PoE Output (optional/add-on)
- 400Mbps throughput



MAX Mobile HD2 Mini

The **MAX HD2 Mini** packs big features, such as dual embedded cellular, SpeedFusion bandwidth bonding, and PoE, into a tough, compact enclosure that stands up to life on the go.

- No built in Wi-Fi for Security Hardened networks
- PoE Output capable (with optional PoE kit add-on)
- 300Mb Bi-directional throughput

MAX Mobile: Transportation



Pepwave MAX Transit

With a compact form factor, simultaneous dual-band 11ac Wi-Fi, and reliable cellular connectivity, the MAX Transit is ready to deliver fast, reliable Wi-Fi hotspots to your passengers.

- Simultaneous Dual Band 11ac Wi-Fi
- DIN Mount kit makes install easy
- Built in GPS capabilities
- 1x LTE Cellular Modem
 - LTE-A version available



Pepwave MAX Transit Duo

With a compact form factor, simultaneous dual-band 11ac Wi-Fi, and reliable cellular connectivity, the MAX Transit Duo is ready to deliver fast, reliable Wi-Fi hotspots to your passengers.

- Dual Embedded Cellular Modems
 - LTE-A version available
- Simultaneous Dual Band 11ac Wi-Fi
- DIN Mount kit makes install easy
- Built in GPS capabilities

MAX Mobile: USB Focused



Pepwave MAX On The Go

The MAX On-The-Go is compact and lightweight, and it supports more than 250 USB cellular modems, giving you maximum portability, wide compatibility, and high performance that goes wherever you go.

- InControl 2 manageable
- Built in 11a/b/g/n Wi-Fi AP
- 100Mbps throughput
- Small and lightweight enclosure



Pepwave MAX 700

The MAX 700 supports quad USB modems and SpeedFusion for fast, reliable connectivity anywhere, plus it includes a built-in 4-port GE switch to reduce clutter in your mobile deployments.

- InControl 2 manageable
- Built in 11ac Wi-Fi AP
- 400Mbps throughput
- PoE output with add-on

MAX Mobile: Outdoor Series



BR1 IP55

The BR1 IP55 offers embedded MIMO directional and Omni antennas configurable on the fly, plus built-in PoE output, all in a durable and waterproof enclosure.

- PoE Output support with optional add-on
- Software selectable Omni or Directional Wi-Fi antennas
- 100Mbps throughput



BR1 IP67

With an embedded cellular modem in a tough IP67 enclosure, the BR1 IP67 is the most accessible of our IP67 rated cellular family.

- IP67 enclosure = ultimate protection!
- PoE Input simplifies wiring
- Deploy where cell signal is best! No extra antennas!
- 100Mbps throughput



HD2 IP67

The HD2 IP67 offers dual embedded cellular modems and PoE support, encased in a shock and vibration certified, waterproof enclosure.

- IP67 enclosure = ultimate protection!
- PoE Input simplifies wiring
- Dual modem with redundant SIM
- 400Mbps throughput



HD4 IP67

The HD4 IP67 offers quad embedded cellular modems and PoE support, encased in a shock and vibration certified, waterproof enclosure.

- IP67 enclosure = ultimate protection!
- PoE Output simplifies wiring
- 4x Cell Modems with redundant SIM
- 400Mbps throughput



BR1 Mini Features

Feature 1

Multiple Connectivity Options

Multiple Connectivity Options

LTE and LTE-A versions available, **certified with carriers worldwide**



	MAX-BR1-MINI-LTE-US-T	MAX-BR1-MINI-LTE-E-T	MAX-BR1-MINI-LTEA-W-T	MAX-BR1-MINI-LTEA-P-T
Region	United States	Europe/International	Americas/EMEA	Asia Pacific
Standard	LTE Cat. 4	LTE Cat.4	LTEA Cat.6	LTEA Cat.6

Multiple Connectivity Options

LTE and LTE-A versions available, **certified with carriers worldwide**



	MAX-BR1-MINI-LTE-US-T	MAX-BR1-MINI-LTE-E-T	MAX-BR1-MINI-LTEA-W-T	MAX-BR1-MINI-LTEA-P-T
Region	United States	Europe/International	Americas/EMEA	Asia Pacific
Standard	LTE Cat. 4	LTE Cat.4	LTEA Cat.6	LTEA Cat.6
MSRP*	\$299 ¹ / €299 ²	\$299 ¹ / €299 ²	\$399 ¹ / €399 ²	\$399 ¹ / €399 ²

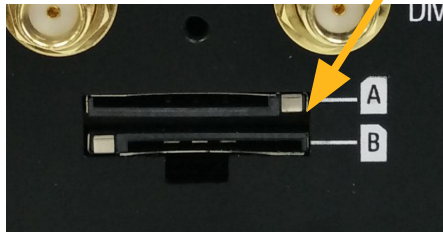
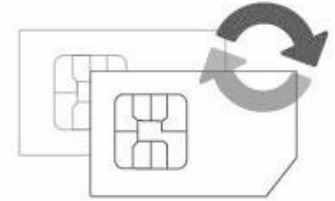
1 - in the Americas, Asia Pacific, Middle East, and Africa

2 - in Europe

* MSRP before any VAT, GST, regional taxes or duties. Actual sales price may vary by region. Check with your official reseller for final pricing.

Multiple Connectivity Options

Redundant SIM: freely choose between different data plans and carriers.



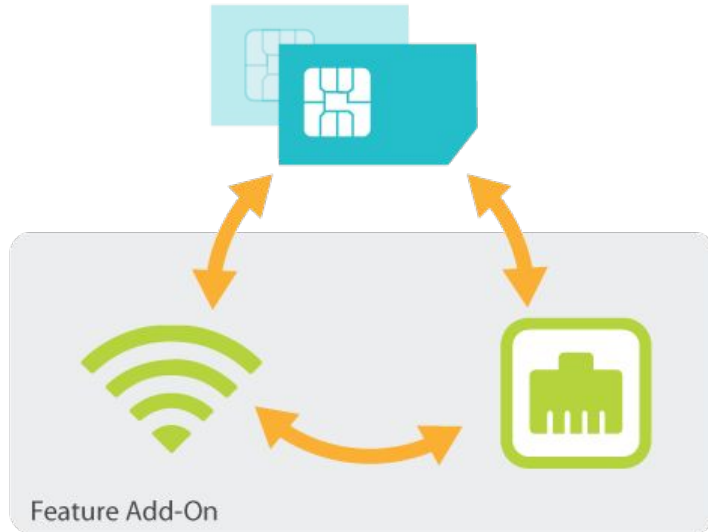
Redundant SIM slots with **automatic switching** for network reliability and to mitigate network outage from blind spots or lack of area coverage.

The MAX BR1 Mini can be configured to automatically switch SIM cards when it is in danger of exceeding a data cap for either SIM.

It also allows travelling across borders using local carriers without changing SIM cards manually.

Multiple Connectivity Options

Ethernet and Wi-Fi WAN for **seamless failover**



Failover between redundant SIM slots comes standard on the BR1 Mini.

Additional failover options* which enables Ethernet WAN and Wi-Fi as WAN are available through the **failover add-on feature**.

That way, you can choose the WAN functionality needed for the deployment.

* MAX-BR1-MINI-LC-FS | Failover software license and related feature set for BR1-MINI, enables Ethernet and Wi-Fi WAN

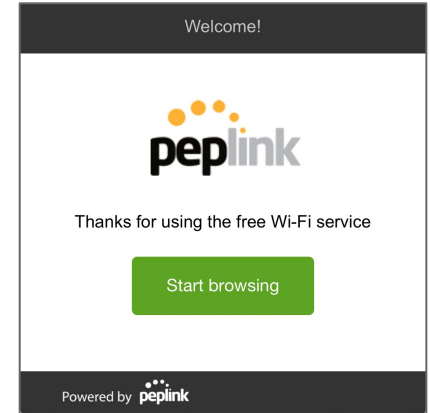
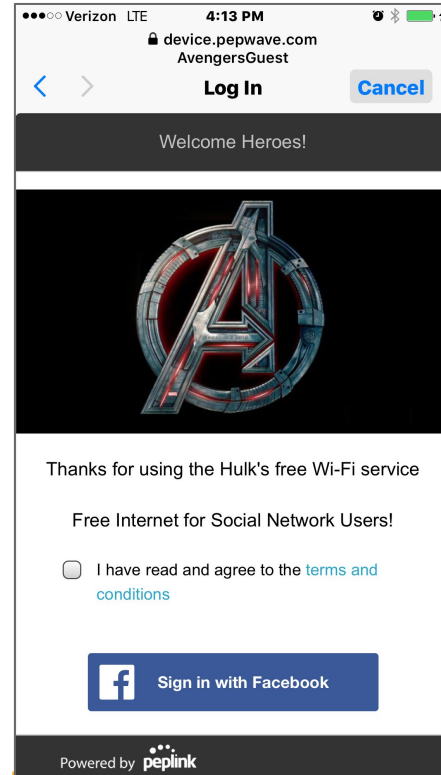
Multiple Connectivity Options

Wi-Fi hotspot with **customizable captive portal** with social media log-in



Customize and set up your network's **Wi-Fi Captive Portal** however you like!

- Multiple **Authentication methods**
 - Email and social media accounts.
- **Custom Graphics**
 - Branding and marketing opportunities.
- **Custom Text**
 - Custom **Terms and Conditions**



Multiple Connectivity Options

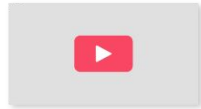
Wi-Fi hotspot with customizable captive portal with social media log-in



Sliding Carousel



Video Ads



Surveys



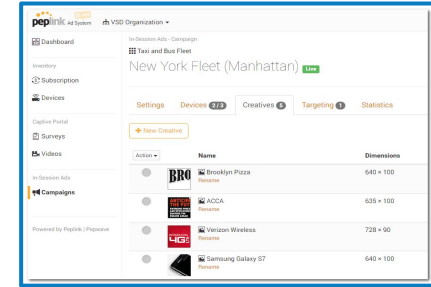
Place ads before Wi-Fi access

- **Carousel** - watch 10 seconds before connecting
- **Video** - watch before connecting
- **Survey** - answer questions before connecting
 - Multiple versions



Functionality

- **Insights** - gathers customer metric information for further review
- **Location Based Ads** - Choose ads to play at specific locations
- **Campaigns** - Easily control ad's importance, set start and end dates, and target impressions and/or clicks.



Easy to Manage

Manage all your campaigns, across multiple devices, from a single browser window. Simple user interface makes creating new campaigns a snap. Plus, you can view all your aggregated reports in one place.

Feature 2

Durability and Compliance

Durability and Compliance

Redundant power supply for mission-critical applications



Accepts power via **terminal block** and **DC jack** for redundant power supply for mission-critical applications.

Optional PoE Input via PoE activation kit to simplify cable management.

Durability and Compliance

Product Certifications



- FCC
- CE
- RoHS
- E-Mark
- **EN 61373**: Shock and Vibration Resistance
- **EN 50155**: Railway Applications - Electronic Equipment used on Rolling Stock
- **EN 61000**: Electromagnetic Compatibility
- **EN 60950-1**: 2006+A11: 2009+A1: 2010+A12: 2011+A2: 2013

Durability and Compliance

Class 1 Div 2 support via optional mounting kit



BR1 Mini are **rated for Class 1 Division 2** deployments. (Specific SKUs may apply.)

Electrical equipment can cause explosions in certain atmospheres. In North America, the most widely used hazardous location classification system is defined by the National Fire Protection Association (NFPA) Publication 70, National Electric Code® (NEC) in Articles 500 to 506. The NFPA establishes area classifications based on Classes, Divisions and Zones that when combined delineate the hazardous conditions of a specific area.



Durability and Compliance

Wide **temperature** range



Benefit from the BR1 Mini's smaller form factor — without sacrificing durability and reliability.

The BR1 Mini has a **wide temperature range** (-40° to +149°F / -40° to +65°C) and can be deployed in even the harshest environments.

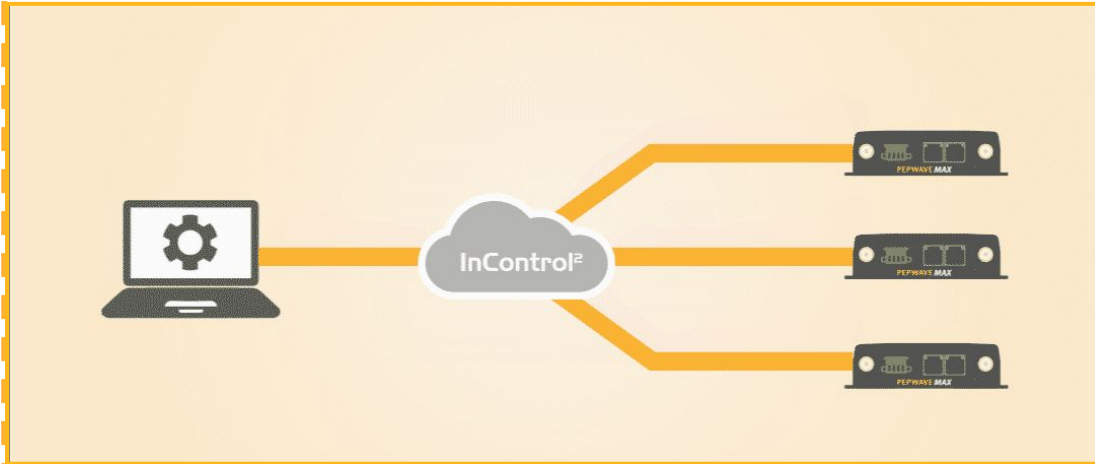


Feature 3

Manageability Features

Manageability Features

Use **InControl** cloud-based management to bulk update device configurations



The BR1 Mini has a straightforward and accessible interface. Anyone can get it up and running — no background in IT needed.

Plus, the BR1 Mini's **cloud management capabilities** make large-scale management a breeze.

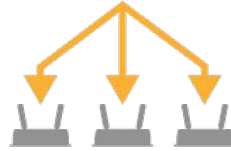
You can monitor and manage hundreds of devices on a single screen. Choose from on-premise or public cloud options.

Manageability Features

Use **InControl cloud-based management** to bulk update device configurations



Options Overview



Bulk Configurator

Master Config File pushed to your Peplink Devices.

63.138.197.58



Remote Device IP Configuration

Pre-built Config File pushed to your Peplink Devices.



Bulk Outbound Policy Configuration

Extract Traffic Steering rules from a config file to apply to your Peplink Devices.



Bulk Firewall Policy Configuration

Extract firewall policies from a config file to apply to your Peplink Devices.



Centralized Firmware Management

Schedule firmware updates for your Peplink Ecosystem.



Centralized SSID Options

Create and Manage network Wi-Fi options.



Customized Captive Portal

Create and Manage a completely customizable Landing Page.

Manageability Features

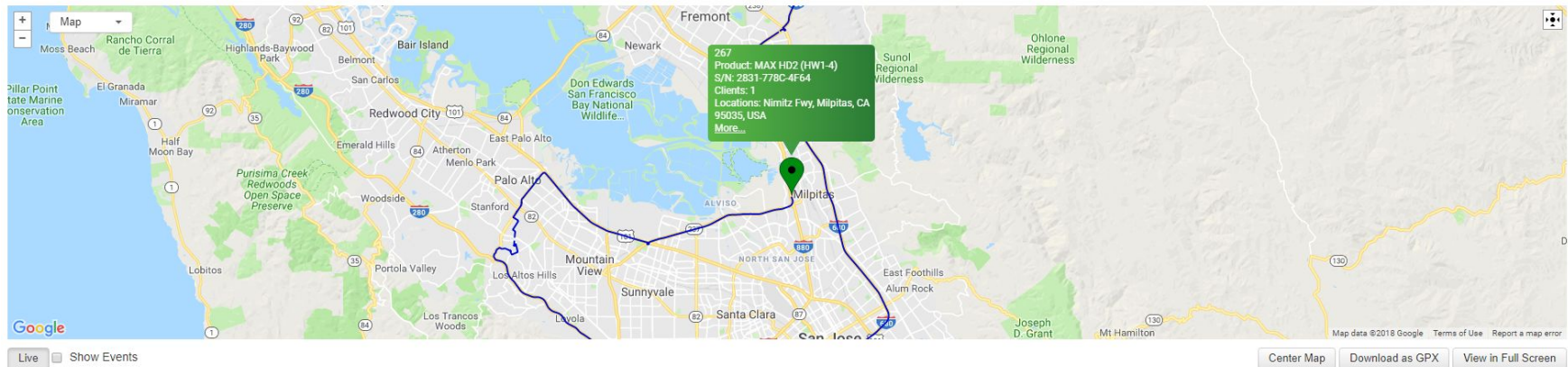
GPS for fleet management



InControl 2 provides **full-fleet device management** when used in combination with our vehicle-mounted, **GPS-enabled devices**, such as the **MAX HD2** and **BR1**.

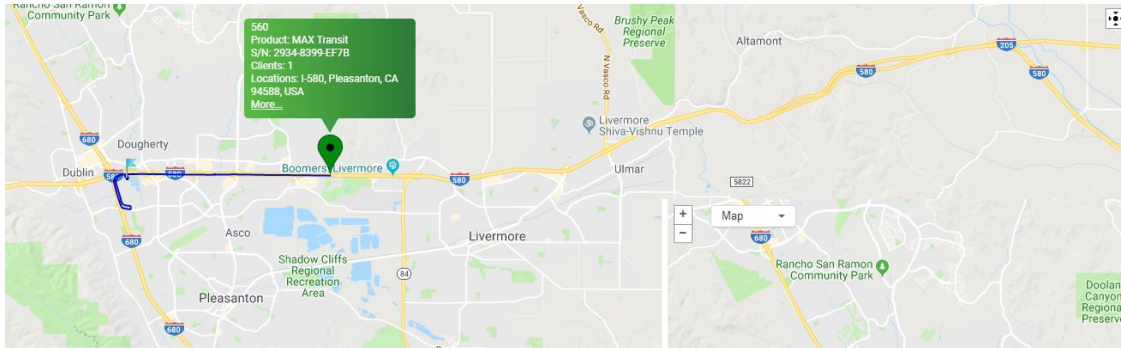
Track locations using our **interactive maps**, check **vehicle speed**, **cellular coverage**, and **traffic conditions**. Play back **route histories** in real-time.

Map

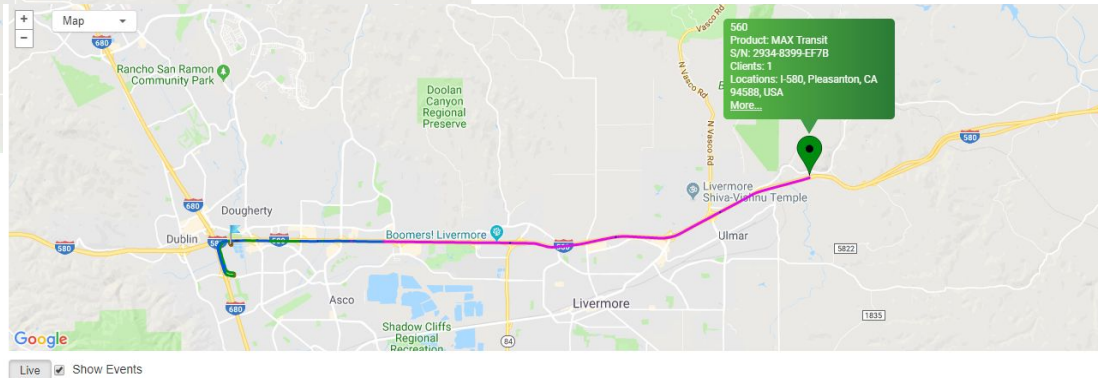


Manageability Features

GPS for fleet management



▲ GPS Route Playback



▲ Vehicle speed tracking



Use cases

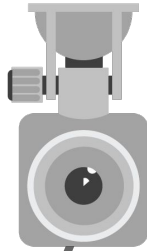
1

Transportation

Connect and track large fleets of vehicles

Transportation Deployment

Connect and track large fleets of vehicles



Fleet Vehicle - MAX BR1 Mini

2 Use InControl to manage your fleets

1 Cellular modem falls back to the **redundant SIM card** if needed.



Internet

Case Study: Travel Trailers

Provision equipment to travel trailers



- **Company**
 - Travel trailers manufacturer in USA
- **Project highlights**
 - 5000+ travel trailers equipped with BR1 Mini as mobile routers
- **Winning Factors**
 - High Durability: shock, vibration and hot temperature resistance
 - Dual power input design perfect for vehicle deployment

2

Retail

Add cellular connectivity to existing landlines
to **keep POS systems online**

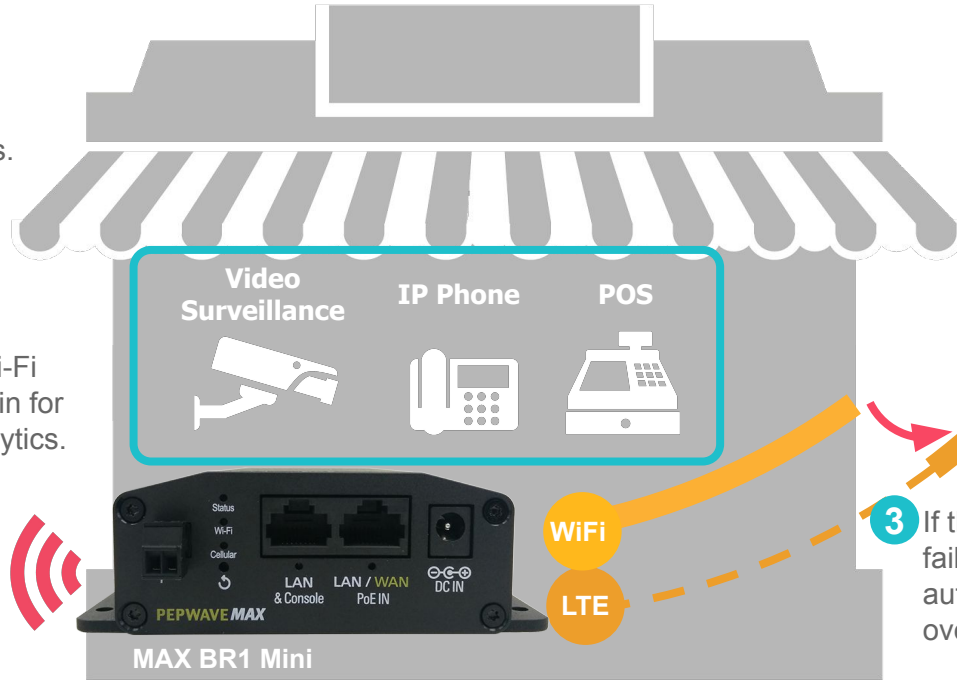
Retail Deployment

Add cellular connectivity to existing landlines to **keep POS systems online**



1 Reliable connectivity for all network devices.

2 Offer guest Wi-Fi with social login for capturing analytics.



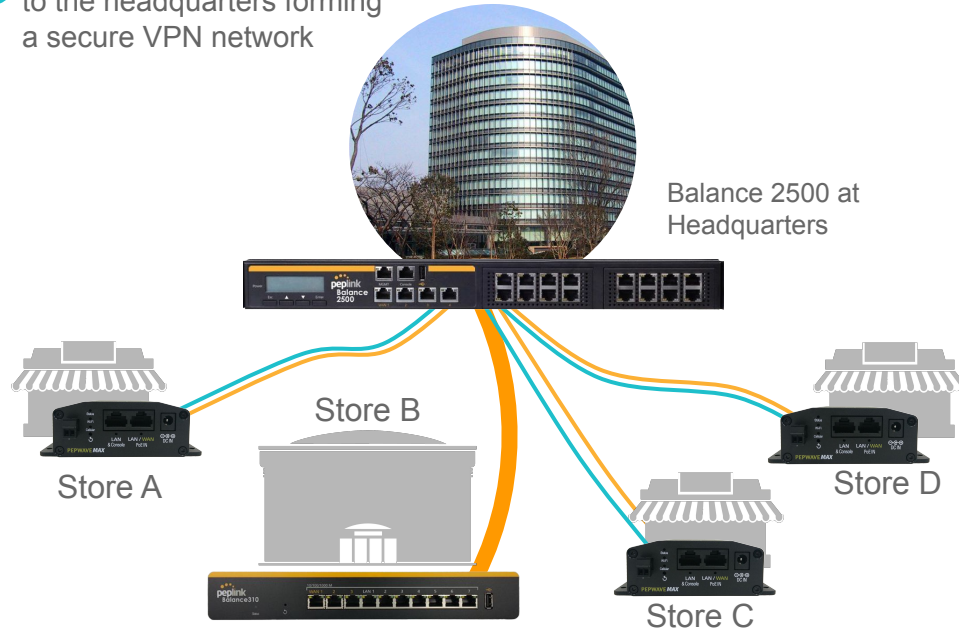
3 If the local Wi-Fi fails, 4G LTE will automatically take over.

Retail Deployment

Add cellular connectivity to existing landlines to **keep POS systems online**



- 4 Connect all store networks to the headquarters forming a secure VPN network



InControl² Group Level

Dashboard Reports PepVPN / SpeedFusion

Device List

Status	Name	Usage	Unique Clients
●	Store A	6.2 Mbps	6
●	Store B	18.2 Mbps	12
●	Store C	4.3Mbps	4
●	Store D	6.2Mbps	5

- 5 Use InControl 2 to Manage stores centrally over cellular.

Retail Deployment

Add cellular connectivity to existing landlines to **keep POS systems online**



- 6** Setup **NG UTM / firewall** in the HQ to secure all the VPN in the network



Balance 2500 at Headquarters

- 7** Use regional blocking and intrusion features of Peplink's device for fundamental local branch security



Store A



Store B



Store C



Store D

Case Study: Foot Mapping Kiosks

Use connectivity to interact with the consumers at retail



- **Company**

- Famous orthopedic footwear brand in USA

- **Project highlights**

- 5000+ foot mapping kiosks are placed in chain of retail stores
- Wireless connectivity allow customers to purchase an **out-of-stock item**; company to update software, remote maintain & monitoring

- **Winning Factors**

- Volume discount for big project deployment
- Reliable and secured connection
- Easy management and allow bulk configuration



Case Study: Chained Restaurants

Provide connectivity to house staffs and consumers



- **Company**

- Franchise restaurants (10,000+) in France and Scandinavia

- **Project highlights**

- Day Zero wireless LTE franchise site connection
- Hot and cold food bar inventory, temperature and best seller analytics monitoring
- Provide Wi-Fi to tablet ordering machines for self service and check out.

- **Winning Factors**

- All-in-one and durable device with LTE failover
- Easy management and allow bulk configuration
- Use **live demo** to convince other franchise branches to adopt

Case Study: Smart Trash

Use connectivity to optimize operations and generate revenue



- **Company**

- Smart Waste equipments supplier in USA

- **Project highlights**

- The smart trashes are placed **indoor**, such as Universities, shopping malls
- With optional web based **Operations and Advertising platform**

- **Winning Factors**

- Flexible WAN options: cellular, ethernet, especially Wi-Fi
- Concurrent Internet connection for its web based features



3

MSP

Affordable VPN endpoint for **large scale deployments**

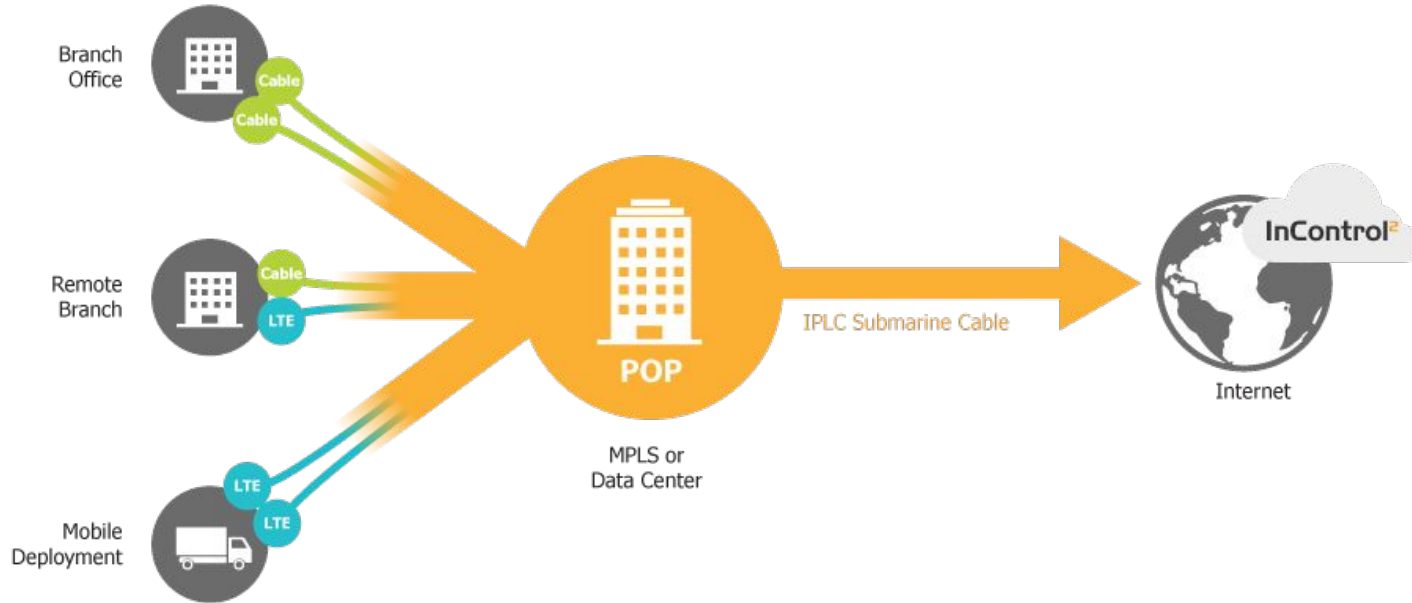
MSP Deployment

Affordable VPN endpoint for **large scale deployments**



MSP Deployment

Affordable VPN endpoint for **large scale deployments**



Case Study: MSP business solutions **peplink**

Integrate to MSP's hardware and internet service solution



- **Company**
 - 1SimplePhone, a managed phone and network provider in USA
- **Project highlights**
 - Integrate **2x BR1 Mini** to their GoBox, which contains high gain antennas, managed battery board, with PoE injection
 - Provides instant, remote site VPN, Wi-Fi and internet access for backup and concurrency.
 - Portable bandwidth for live camera or event video and audio streaming.
 - GPS Tracking for Driver Risk Management.
- **Winning Factors**
 - Various WAN options, and LTE as a backup
 - Hot failover between devices to maintain a seamless connectivity
 - Security of 256-bit encryption provide reliability



Case Study: MSP business solutions **peplink**

Integrate to MSP's hardware and internet service solution



- **Company**

- 1SimplePhone, a managed phone and network provider in USA

- **GoBox highlights**

- OLED or EINK screen to show cellular signal, battery and ip info.
- One button press to switch cellular provider.
- Integrated lithium battery and charging circuit
- Integrated AC power supply optional solar input
- Optional VoIP Cordless phone base

- **More info on SIM switcher**

- <https://youtu.be/MVNGcORqOb4>

Contact info.: Sales@1simplephone.com | +1 469-320-1111

4

IoT application

**Affordable VPN for
remote monitoring or management & security backhaul**

Case Study: Agriculture IoT

Use connectivity to industrialize farming process



- **Company**

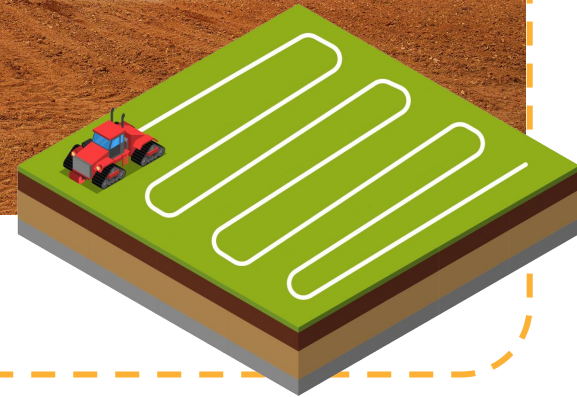
- Agriculture solution provider in France

- **Project highlights**

- Use of GPS to guide the driving route and improve pass-to-pass accuracy
- Provide Wi-Fi to agriculture equipments in the cabin

- **Winning Factors**

- GPS features
- Redundant SIM to maintain unbreakable connectivity



Case Study: Privacy security

Use connectivity to monitor your property



- **Location**

- On premise at private home or remote site offices.

- **Project highlights**

- IP video monitoring array with 99.999% uptime via BR1 Mini as backup to existing landline connection.
- LTE(A) and Wi-Fi as WAN providing hot failover to hardwired WAN (optional license).
- OoB management to each deployed device.

- **Winning Factors**

- Cost effective for multiple deployments.
- Redundant SIM to maintain unbreakable connectivity and optional data on demand policies.
- SUPER small form factor for covert installation.
- Industrial grade reliability with wide temperature range.



FusionHub - a virtual appliance

FusionHub Features



Virtual SD-WAN appliance

- Deploy Globally in Minutes
- Control your infrastructure
- Eliminate reliance on physical sites

Fully Featured UI

- Split Tunneling/Outbound Policy capable
- Use Public IP to build Tunnel and Port Forwarding

Easy to Integrate

- Variety of FusionHub Instances/sizes available
- Demo version available on site
- Can install on VMware and Cloud Platforms

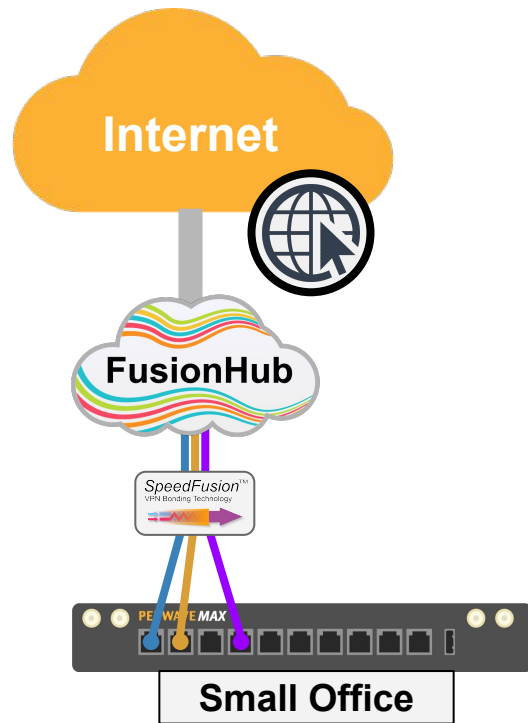
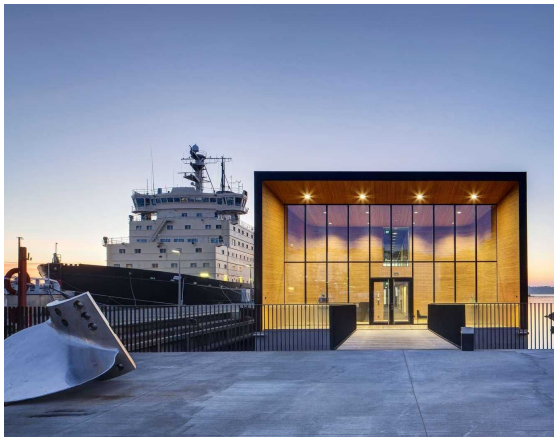


FusionHub SOLO

SpeedFusion Connectivity for Small/Remote offices

peplink

NEW



- Bring the **Power of SpeedFusion** to small office networks!
 - **1x peer** connection
 - **100mb** throughput
 - Cost: **FREE!**

Summary

Summary

The BR1 Mini combines utility and value. It can fit deployments with special requirements (e.g. C1D2, Rolling Stock) while offering the biggest bang for the buck.

Key Features

Multiple Connectivity Options

- LTE and LTE-A versions available, certified with carriers worldwide.
- **Redundant SIM**: freely choose between different data plans and carriers.
- Ethernet and Wi-Fi WAN for **seamless failover** (hot failover with license).
- Wi-Fi hotspot with **customizable captive portal** with social media log-in.

Durability and Compliance

- Accepts power via terminal block and DC jack for **redundant power supply** for mission-critical applications.
- Product Certifications: E-Mark, EN 50155:2007 Railway Application, EN 61373:2010 Rolling stock, shock and vibration.
- **Class 1 Div 2 support** via optional mounting kit.
- Wide temperature range: -40° to +149°F / -40° to +65°C.

Manageability Features

- Use InControl cloud-based management to bulk update device configurations.
- GPS for **fleet management**: Track each vehicle's location and **route history**. Use geofencing to receive alerts when a vehicle goes out-of-bounds.

Deployments

- **Transportation**: Connect and track large fleets of vehicles.
- **Retail**: Add cellular connectivity to existing landlines to keep POS systems online.
- **MSP**: Affordable VPN endpoint for large scale deployments.



Learn more



peplink | Live! Forums | InControl 2 Login | Find Router

Home | Markets | Products | Technology | Solutions | Support | Company | Partners | Buy Now | Newsroom

MAX Single Cellular Router

Single Cellular | 4G LTE Cellular | Outdoor

BR1	BR1 Slim	BR1 Mini	BR1 M2M	BR1 ENT	BR1 Pro	Hotspot	Transit
Embedded 4G LTE Automatic Failover Router	Compact 4G LTE Mobile Wi-Fi	Embedded 4G LTE M2M Specialist	4G LTE M2M Specialist	4G LTE M2M Specialist	4G LTE M2M Specialist	One-Device Standalone Wi-Fi Network Router	Specialized Router for Transportation V.I.

MAX BR1 Mini

A New, Affordable Cellular Router for Large-Scale Deployments

At last — an affordable, industrial-grade LTE router for transportation, digital signage, automated kiosks, and M2M deployments. From 3G to LTE, the BR1 Mini supports a wide range of cellular standards and wireless frequencies to meet your every need. Enjoy GPS fleet, usage reports, and statistics.

Transportation | **Automated Check**
Fleet Signage | **Remote Monitoring**

> [Visit product page](#) <

MAX BR1 Mini
Industrial-Grade 4G LTE Router

peplink | PEPWAVE

Rugged 4G LTE Router with Add-On Automatic Failover

The BR1 Mini offers redundant SIM slots with automatic switching, DC or terminal block power capability, advanced GPS fleet tracking, and remote management, all packed into a durable metal enclosure.

Compatible Carriers: Verizon, Sprint, AT&T, T-Mobile, Rogers, Telus, Bell, US Cellular

Out of Band Management, IOT, and M2M Telemetry

Manage and configure your networking device securely even if the primary line is not available. Gather data from meters, sensors and other remote equipment via RS-232 serial port adapter.

Add-On WAN Capabilities

The MAX BR1 Mini has an optional license that enables Ethernet and Sprint VoIP for failover between different WAN connections.

Redundant SIM Slots for Multiple Carriers

Redundant SIM slots with automatic switching for reliable networking. You can set the BR1 Mini to automatically switch SIM cards when you're about to exceed a data cap. It also allows you travel across borders without changing SIM cards manually.

Support for T-Mobile (Band 12) and Sprint (Band 26)

The BR1 Mini LTE supports Band 12 (700 MHz) for T-Mobile and Band 26 (850 MHz) for Sprint*. These bands penetrate buildings extremely well and also cover longer distances.

Fleet Tracking and Management

With built-in GPS fleet tracking and InControl cloud-based management, you can keep tabs on location and manage your mobile network from any internet-connected device.

Terminal Block for Secure Power Supply

The MAX BR1 Mini is equipped with a terminal block for secure power installation in vehicles and other locations.

* Sprint Certification Pending

> [Download Datasheet](#) <

Stay Connected & Up-to-Date



Social Media

Stay up to date on the latest offerings from Peplink on all the major Social Media channels.

Community Forum

Our Forum (forum.peplink.com) truly keeps you connected to all the latest from Peplink directly.

In addition, the forum is a direct channel to our Teams for questions, help, etc.





Upcoming webinar:

A promotional banner for a webinar. On the left, a teal box contains the text 'JUN 5 WEBINAR'. To its right, a grey box lists regions: 'APAC AU AF EU'. Below this, the text reads 'Prepare for the 5G Future with Peplink'. The right side of the banner features a 3D illustration of a person standing next to large yellow '5G' characters, with a Wi-Fi signal icon above them.

JUN 5 WEBINAR APAC AU AF EU Prepare for the 5G Future with Peplink

> More info - <https://bit.ly/2vNZICQ> < > [Sign up now](#) <

Announcements:

We will **record** and make available today's webinar and **presentation** to all campaign registrants early next week.